

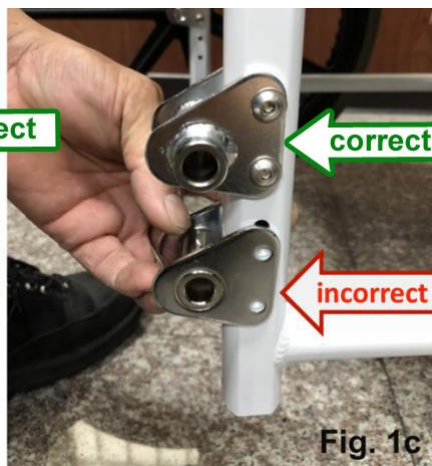
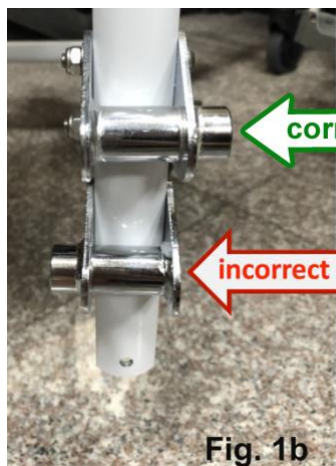
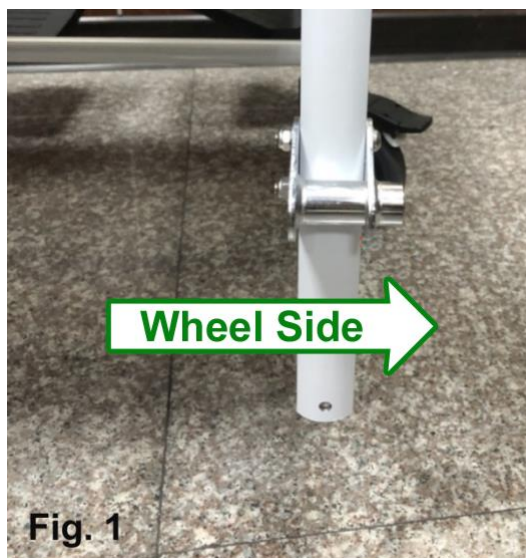
EZee Life™

22" & 24" Quick Release Wheels Assembly Instructions

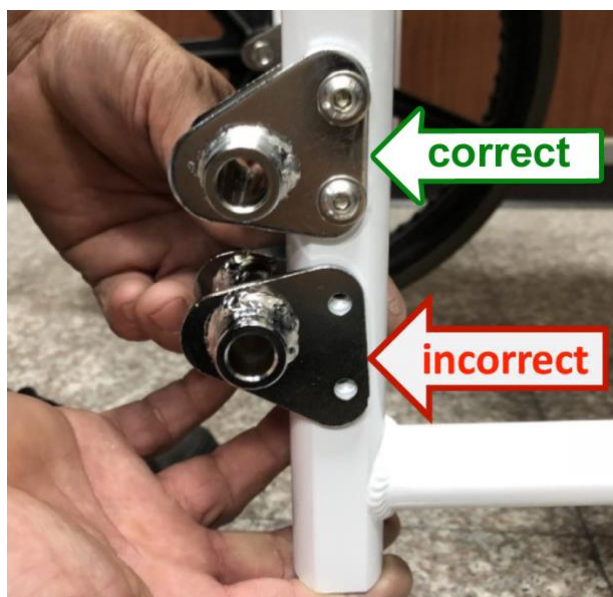


EZee Life™ Products
34 Futurity Gate, Unit 15
Concord, Ontario L4K 1S6

- 1) Attach the triangular axle brackets to the lower back posts of the commode with the extended portion of the axle tube extending to the outside of the commode and the axle tube to the back of the back tube (see Fig. 1).
Tools needed: 4mm allen key & 10mm wrench.



The bevel edge of triangle bracket is the top.



- 2) After triangle bracket assembly, press the button on the axle end to release the locking ball bearings and insert the axle through the wheel from hand rim side of the wheel. (see Fig. 2)



- 3) Once the axle is fully inserted through the wheel, align the axle end with the opening in the axle tube on the triangle bracket and slide the axle through it.

Note that the lock release button must always be depressed while inserting and removing the axle.



Fig. 3



Fig. 3a



Fig. 3b

- 4) Ensure the axle is inserted properly with ball bearings fully through the bracket. Please note the clearance between the ball bearing and the surface of the bracket must not exceed 0.3 mm.

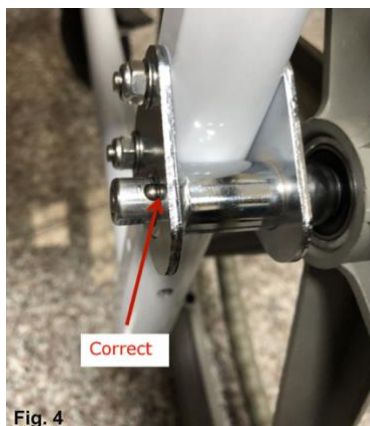


Fig. 4

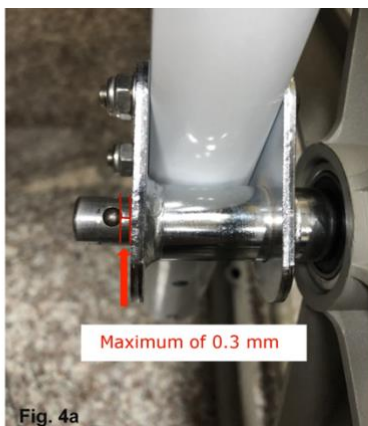


Fig. 4a

- 5) If over 0.3 mm, the distance between the axle and the plunger must be adjusted (see Fig. 5). Holding the axle at the bearing end with an 11 mm open end wrench, tighten the adjustment nut at the button end of the axle using a 19 mm socket.

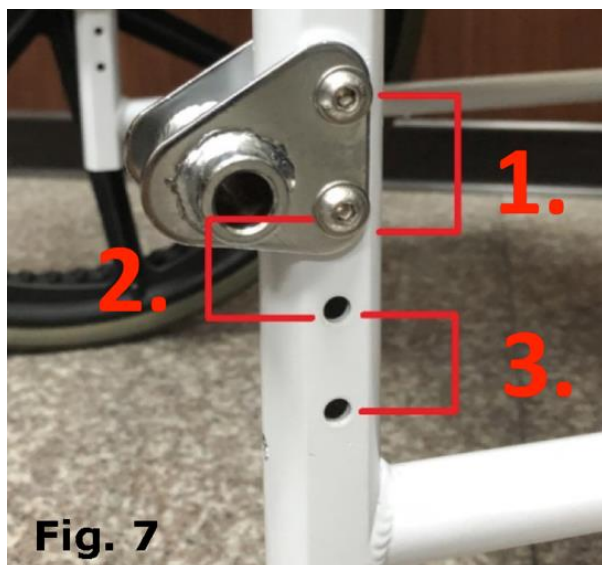


- 6) After adjusting the axle thread should be visible beyond the nut.

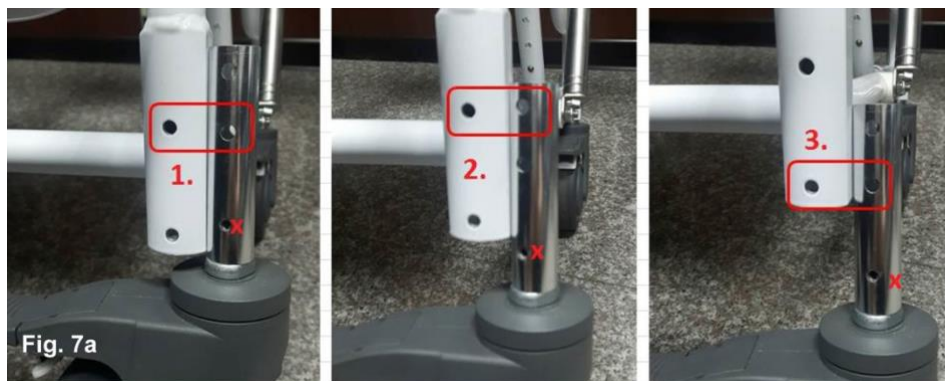


- 7) There are three wheel heights on the back frame as seen in the image below (see Fig. 7). Ensure both the rear wheel height and caster height are set to the same positions.

Rear Axle Settings



Matching Caster Settings



Brake Installation

Wheel locks must be installed with the large wheel installation as the caster brakes are removed with the rear casters.

- 1) Attach the large opening of the brake clamp to the seat rail loosely.
- 2) Slide in the brake mounting bar to small side of the brake clamp and continue to tighten until it is just snugly attached.
- 3) Position while assembly so that the locking bar is in front of the commode tire.
- 4) Tighten clamp fully and apply the brake. It should press in to the tire between $\frac{1}{8}$ " and $\frac{1}{4}$ " when adjusted properly. Check to ensure the wheel won't spin when the brake is applied.
- 5) Repeat for wheel on opposite side of the commode.

If the wheels begin slipping at any time when the brakes are applied loosen the brake clamp slightly and slide the brake assembly closer to the wheel and retighten



For video instructions please visit:

<https://youtu.be/VTYaE7jdzOU>

To See all the Aluminum Commode Instruction Videos please visit:

<http://www.healthlinemedical.com/instructions.php>

Warranty:

EZee Life™ products carry a one-year warranty against manufacturing defects, faulty materials and workmanship.

In the event of a defect covered by this warranty, we will, at our option, repair or replace the item. Please contact your supplier/dealer for assistance should a defect become apparent.

The warranty does not extend to consequential costs resulting from the fault or defect in the product, in particular freight and travel costs, loss of earnings, expenses or other expenses which may occur.

The warranty does not cover normal wear and tear resulting from normal use or damage caused by accident, misuse, negligence or improper installation or assembly.

The vendor/manufacturer will not accept responsibility for any damages or injury caused by misuse, negligence or non-observance of the instructions supplied.

Imported & Distributed by:

Healthline Medical Products

1065 E Story Rd. Winter Garden, FL 34787

Toll-Free: 1-800-987-3577 Fax: 407-656-5641

Email: pvcmeds1@aol.com