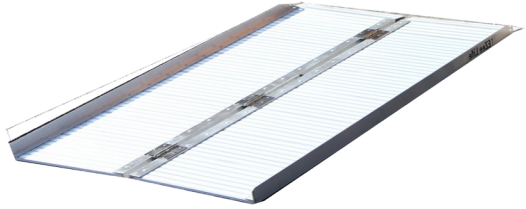
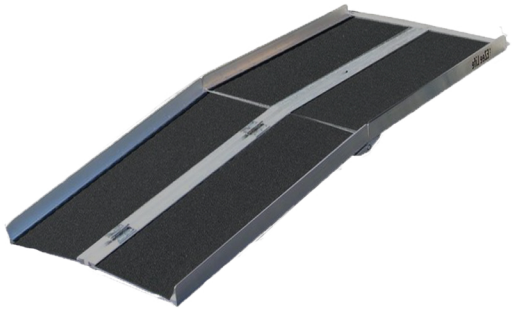


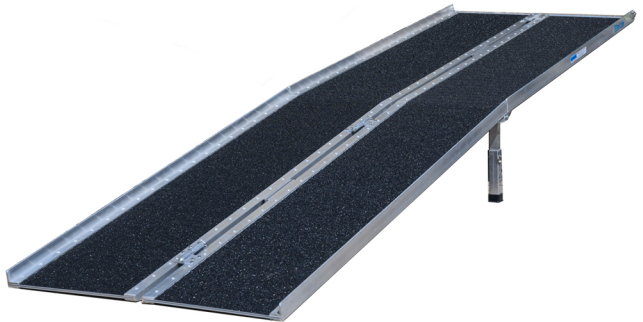
Portable Wheelchair Ramps



Single Fold (Suitcase) Ramp



Multifold Ramp



Multifold Ramp 8, 10 & 12 ft with support

HPU Medical Wholesale

34 Futurity Gate, Unit 15, Concord, Ontario L4K 1S6



Features

Weight capacity of 600lbs (272 kgs), 500lbs for 12' length

Non-Slip Surface

Durable rust proof aluminum construction

Single-fold models available in 3', 4', 5' & 6' lengths

Multifold models available in 5', 6', 7', 8', 10' & 12' lengths

Multifold models of 8', 10' & 12' have height adjustable mid-ramp support.

Usable width of 29"

Maximum Height Limit by Length

3' ramp: occupied loading: 6" max., unoccupied loading height: 9"

4' ramp: occupied loading: 8" max., unoccupied loading height: 12"

5' ramp: occupied loading: 10" max., unoccupied loading height: 15"

6' ramp: occupied loading: 12" max., unoccupied loading height: 18"

7' ramp: occupied loading: 14" max., unoccupied loading height: 21"

8' ramp: occupied loading: 16" max., unoccupied loading height: 24"

10' ramp: occupied loading: 20" max., unoccupied loading height: 30"

12' ramp: occupied loading: 24" max., unoccupied loading height: 36"

*Occupied is a person sitting in the wheelchair/scooter while loading (2:12 slope or 9.6 degree angle)

**Unoccupied is loading with nobody sitting in the wheelchair/scooter (3:12 slope or 14.5 degree angle)

MAXIMUM WEIGHT CAPACITY IS 600 lb. (weight rating is based on evenly distributed load on 2 axles)

Maintenance

- 1) It is the user's responsibility to check the loading ramp and components before each and every use. If the ramp is damaged, it should NOT be used.
- 2) Maintain the ramp by regular cleaning. Periodically lubricate the hinges. Clean ramps with water and mild detergent.

Using the Ramp

Loading wheelchair:

- a. Position the wheelchair in the direction of the ramp with front wheel forward. Roll or ride the wheelchair slowly and steadily up the ramp, ensuring that the wheels follow the center of the ramp.
- b. Take extra care in wet conditions to ensure the wheels do not slide on the ramp.

Unloading wheelchair:

- a. Position the ramp as detailed above directly behind the rear wheel of the wheelchair. Allow the wheelchair to roll backwards down the ramp, ensuring the wheels follow the center of the ramp.
- b. Always have a qualified assistant present when using the ramp.

Ramp Safety Pins

EZee Life™ wheelchair ramps come equipped with locking pins that are used to secure the ramps for use. These pins are pushed through hole in the top end of the ramp into holes drilled into the landing where ramps are used regularly. Use these pins whenever possible.

The 8', 10', & 12' ramps come with a vertical support leg with four points of adjustable length. Ensure the leg comes in contact with the ground. Once desired length is attained use the push pin to secure the new position.



Safety Precautions

- 1) NEVER exceed the rated capacity of your ramp.
- 2) NEVER exceed the maximum height limit listed above.
- 3) Use caution at all times when loading and unloading.
- 4) ONLY load and unload onto a stable, level surface.
- 5) NEVER stand in the path of equipment or vehicle. Keep bystanders and children away.
- 6) DO NOT leave attached ramps unattended.
- 7) Beware of hinged areas. Keep all body parts clear of hinged areas.
- 8) Ramp surfaces will have less traction when wet. Use caution.
- 9) Always fold and secure ramp with the latches before carrying.
- 10) The ramp is not a toy. DO NOT use ramp as a jump, scaffold, bridge, ladder or anything other than its designed purpose.
- 11) ALWAYS make sure the top of the ramp attaching lip is secured onto step, landing or vehicle before using. We strongly recommend using the supplied safety pins to prevent ramp kick out.
- 12) ALWAYS follow manufacturer recommendations for chair or scooter.
- 13) Regularly check your ramp for worn, loose, or damaged parts. If you find any of these conditions DO NOT USE THE RAMP. Contact your Dealer for repairs. Failure to do so may cause severe injury!



14) The surface of the ramp may become slippery in icy or wet conditions.

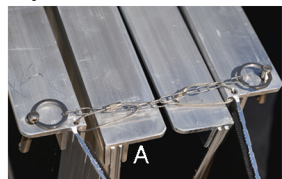
Caution should be used when using the ramp.

15) Keep the ramp surface free of dirt and debris.

16) Do not add to or modify any part of the ramp.

17) When folded, use the pins (fig. A) to secure the ramp

18) If transport is required, fold and secure in provided travel bag.



Limited Warranty:

Ezee Life® products carry a one year warranty against manufacturing defects, faulty materials and workmanship only. Any alterations, misuse, abuse, or accidental damage voids this warranty.

Ezee Life® reserves the right to replace or repair any part that has become defective.

The warranty does not extend to consequential costs resulting from the fault or defect of the product: freight and travel costs, loss of earnings, or other expenses that one may incur.

Warranty is valid for the original purchaser only and the original receipt must be presented before any warranty options are considered.

Please also be prepared to provide the date of purchase and serial number (if applicable).

Imported / Distributed by:

HPU Medical Wholesale
34 Futurity Gate, Unit # 15
Concord Ontario L4K 1S6
Local: 416-739-1267
Toll Free: 888-634-5808
Fax: 416-739-7171