

You may create your own case study form or simply replace sample/example copy with your case study information.

## Introduction:

Write a brief introduction. For example, the case study was conducted to evaluate the effectiveness of the (Manufacturer and Model) wheelchair cushion

## Case History:

### **Evaluator:**

Your Name/Credentials

### **Facility:**

University Name, City, Town, Province/State

### **Client Name:**

(pseudonym) Client

### **Gender:**

Male/female

### **Age:**

Age of Client

### **Relevant Medical History: (example shown)**

- Diagnosis – Spinal Cord Injury, T6/7
- Age at Onset (13 yrs, Birth, etc)
- History of reoccurring skin ulcers at right Ischial Tuberosity,
- Sits with marked pelvic obliquity and posterior pelvic tilt when seated in wheelchair.
- Pelvis presents as flexible during mat evaluation

### **Level of Function: (100-125 words maximum)**

Use this section to describe the overall level of function for the client.

For example: Ceasar is an active wheelchair user with good upper extremity function. He has good upper extremity function with no significant limitations in reach or grasping functions. When sitting in his wheelchair, He presents with a marked pelvic obliquity, with the right side lower than the left by approximately 1.5 inches and a posterior pelvic tilt of 25°. He can perform independent lateral transfers to and from his wheelchair.



**Before photo. Insert or attach.**

### **Previous Equipment**

**Wheelchair:** List model, seat width and seat depth

**Cushion:** brand, model and size

**Cushion Age:** indicate how long client has had cushion

**Back Support:** (as an example) Vinyl backrest upholstery 12" high or make and type of back

**Other:** include additional accessories such as: lap belt, arm rests, calf strap, etc

### **Goals:**

- Provide examples of goals
- Improve pelvic alignment (obliquity and posterior pelvic tilt)
- Reduce High interface pressures

Add **Short** narrative here as needed

You may create your own case study form or simply replace example copy with your case study information.

## Client Evaluation:

(example) The mat evaluation revealed a flexible pelvis with no significant limitations in mobility.

OR

The mat evaluation revealed limitations in pelvic mobility with

- limits in range.....
- other stuff

## Intention:

Pressure mapping was completed using the XYZ system. All readings were completed in the client's wheelchair on his existing cushion and the following:

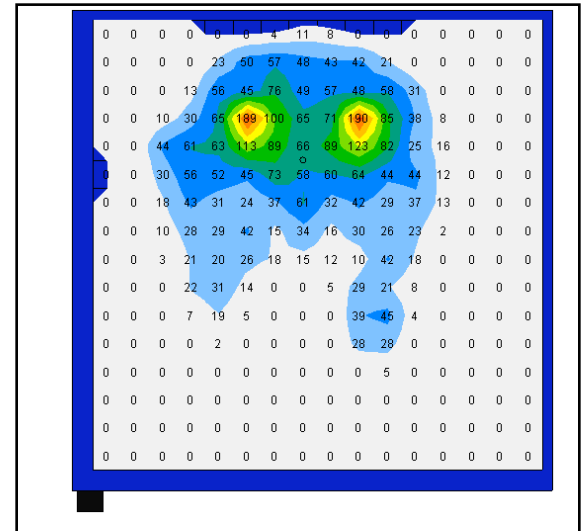
- Cushion Name, 16X18
- Cushion Name, 16X18

Add specifics about any changes to footrest height, arm height or other changes that may also affect the outcome.

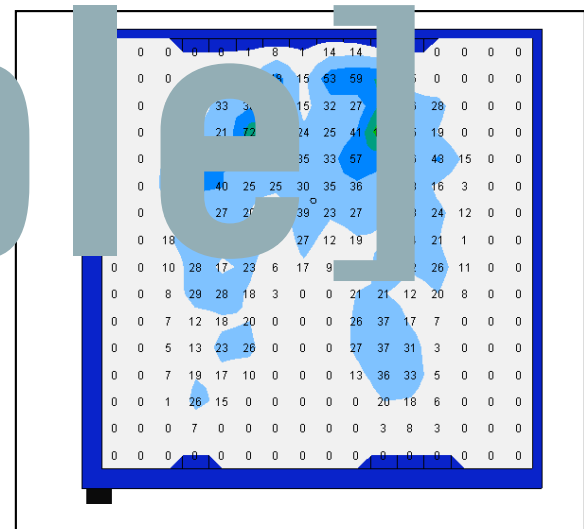
## Results:

Add narrative describing results. Include pressure map images if possible or before/after photos of client in old system and new.

This is a good spot to document changes in posture such as measured improvements in postural alignment. (example: pelvic obliquity was decreased from 1.5 inches on the old cushion to .5 inches on the new cushion)



Insert "Before" pressure mapping image



Insert "After" pressure mapping image

## Discussion:

This case study shows the improvements in posture, stability and pressure distribution patterns that were obtained for this client using the "XYZ" cushion.

This is a good spot to add any subjective comments from the client.